



NO: SD-SC-001

DATE: 2007/09/18

PAGE: 1 of 5

SAFETY DIRECTIVE -MANDATORY-

Czech Aircraft Works s.r.o.
Na Zahonech 1177
Building A10s
686 04 Kunovice -Airport
Czech Republic
tel: 00 420 572 543 456
fax: 00 420 572 543 692

REV: -

DATE: -

MODEL AFFECTED: SPORTCRUISER

SUBJECT: ELEVATOR HORN REINFORCEMENT

ASSEMBLED AIRCRAFTS AFFECTED: S/N 06SC001 THRU 06SC009, 06SC017, 06SC020, 06SC037, 06SC038, 06SC041, 07SC014 THRU 07SC049, 07SC051 THRU 07SC053, 07SC055

KITS AFFECTED: OC3833(S/N 07SC023QBK), OC3336(S/N 07SC030QBK), OC4074(S/N 07SC037QBK), OC3837(S/N 07SC048QBK), OC3855(S/N 07SC049QBK), OC3857(S/N 07SC057QBK), OC3856(S/N 07SC058QBK)

COMPLIANCE: Immediately after receipt of this safety directive.

DESCRIPTION:

Elevator horn must be strengthened to achieve of better rigidity of elevator control system.

APPROVAL:

The engineering design aspects of this bulletin are Czech Aircraft Works s.r.o. approved.

MANPOWER:

Aproximately 2 man-hours are required to complete this bulletin. Man-hours are based on hands-on time, and may vary with personnel and facilities available.

WARRANTY:

Owners/operators of SPORTCRUISER who comply with the instructions outlined in this bulletin will receive a special 100% warranty credit for the part contained in the "Required Material" section of this bulletin.

MATERIAL:

PART NUMBER	NOMENCLATURE	QUANTITY
AVEX 3,2 X 9,5 Al/St PH	RIVET	10 ea
ST0420L	ELEVATOR HORN REINFORCEMENT LEFT	1 ea
ST0420P	ELEVATOR HORN REINFORCEMENT RIGHT	1 ea

CONSUMABLE MATERIAL:

PART NUMBER	NOMENCLATURE	QUANTITY
SOLVENT	ACETONE, MEK, ISOPROPYL ALCOHOL	10 ml
PRIMER	ALKYD, EPOXY OR POLYURETHANE	5 ml
TOP COAT	ACRYLIC-POLYURETHANE	5 ml



NO: SD-SC-001

DATE: 2007/09/18

PAGE: 2 of 5

SAFETY DIRECTIVE -MANDATORY-

Czech Aircraft Works s.r.o.
Na Zahonech 1177
Building A10s
686 04 Kunovice -Airport
Czech Republic
tel: 00 420 572 543 456
fax: 00 420 572 543 692

REV: -

DATE: -

SPECIAL TOOLS:

No special tools required.

WEIGHT AND BALLANCE:

Insignificant.

ELECTRICAL LOAD DATA:

Not affected.

REFERENCES:

SPORTCRUISER Maintenance and Inspection Procedures (MIP)

PUBLICATIONS AFFECTED:

SPORTCRUISER Maintenance and Inspection Procedures

ACCOMPLISHMENT INSTRUCTIONS:

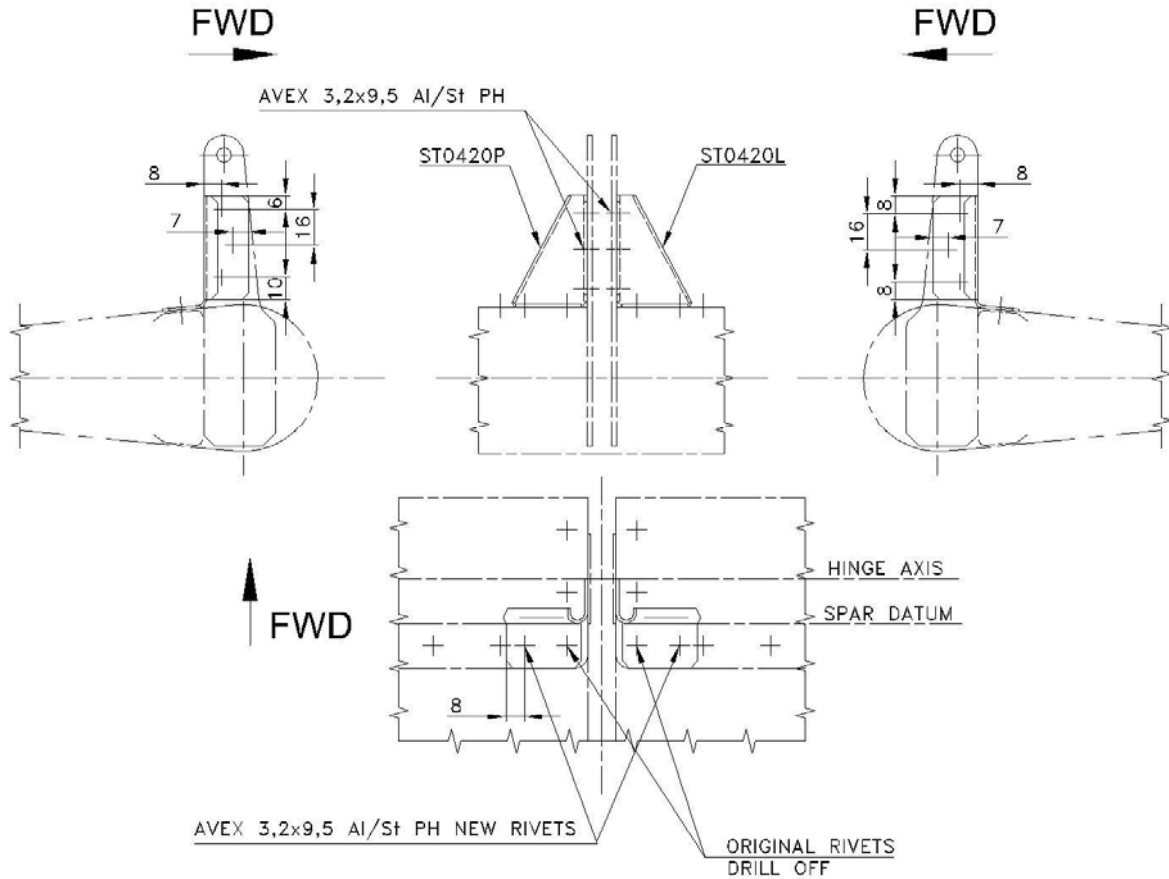
1. Remove horizontal stabilizer. Refer to SPORTCRUISER MIP, Chapter 5.3.1.
2. Drill two original rivets off in elevator assembly according to picture 1. Refer to SPORTCRUISER MIP, Chapter 15.
3. Locate and install left and right Reinforcement according to Drawing 1. Use clamps and clecos to fix reinforcement in its correct position. (See picture 1, 2)

NOTE:

ALL DIMENSIONS ARE IN MILIMETERS

4. Remove Fuselage Tip Cover, P/N SF0222N
5. Cut Fuselage Tip Cover according to Draving 2. (See picture 3)
6. Use a solvent for cleaning and degreasing of new rivet heads and cutted edges. Apply primer and top coat on these areas.
7. Install Fuselage Tip Cover
8. Install horizontal stabilizer. Refer to SPORTCRUISER MIP, Chapter 5.3.2.
9. Check horizontal stabilizer and elevator control: freedom of move, correct attachement and security.
10. Restore aircraft to the airworthy condition.
11. Anotate aircraft records to reflect compliance with this bulletin.

SAFETY DIRECTIVE -MANDATORY-



DRAWING 1



NO: SD-SC-001

DATE: 2007/09/18

PAGE: 4 of 5

SAFETY DIRECTIVE -MANDATORY-

Czech Aircraft Works s.r.o.
Na Zahonech 1177
Building A10s
686 04 Kunovice -Airport
Czech Republic
tel: 00 420 572 543 456
fax: 00 420 572 543 692

REV: -

DATE: -

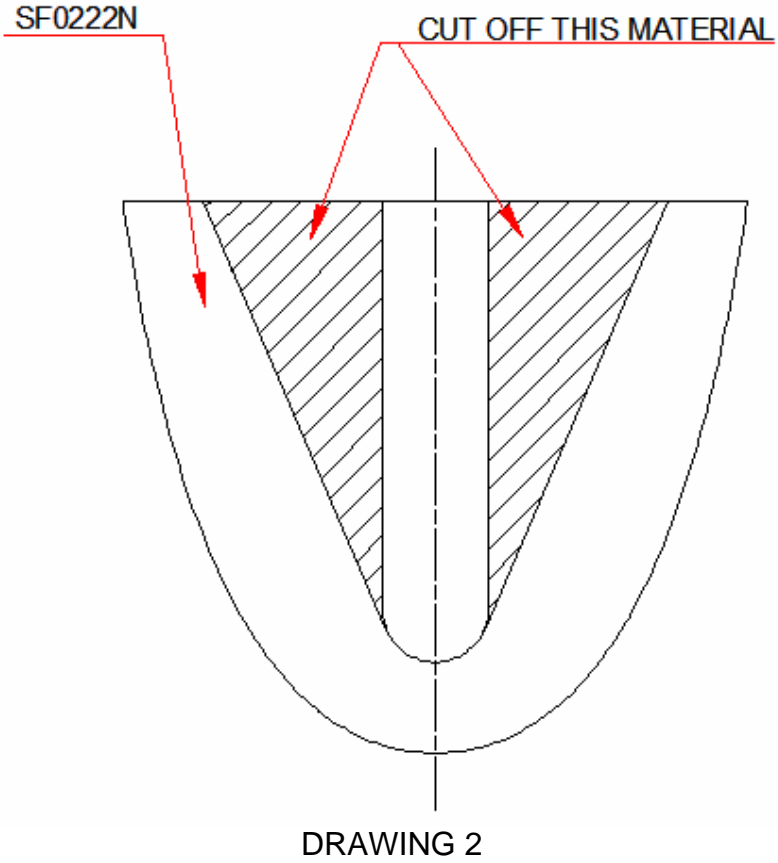


PICTURE 1



PICTURE 2

SAFETY DIRECTIVE -MANDATORY-



PICTURE 3