

# PS-28 CRUISER

(Garmin G3X equipment)

## WIRING MANUAL



Copy No.: -

Revision No.: -

This document is prepared in accordance with the AP DOA Approval No. AP.507.

INTENTIONALLY LEFT BLANK

# PS-28 CRUISER

(Garmin G3X equipment)

## WIRING MANUAL



PS-28 Cruiser aircraft  
is designed and manufactured by



**CRUISER<sup>®</sup>**  
**AIRCRAFT**

Czech Aircraft Group s.r.o.  
Na Záhonech 212, 686 04 Kunovice  
Czech Republic

Website: [www.cruiseraircraft.cz](http://www.cruiseraircraft.cz)  
E-mail: [info@cruiseraircraft.cz](mailto:info@cruiseraircraft.cz)

This document is prepared in accordance with the AP DOA Approval No. AP.507.

**INTENTIONALLY LEFT BLANK**



REV	REVISION NAME	CHANGED PAGES	ISSUE DATE	DATE AND SIGNATURE
-	Initial issue	All	2022-04-22	Bilík

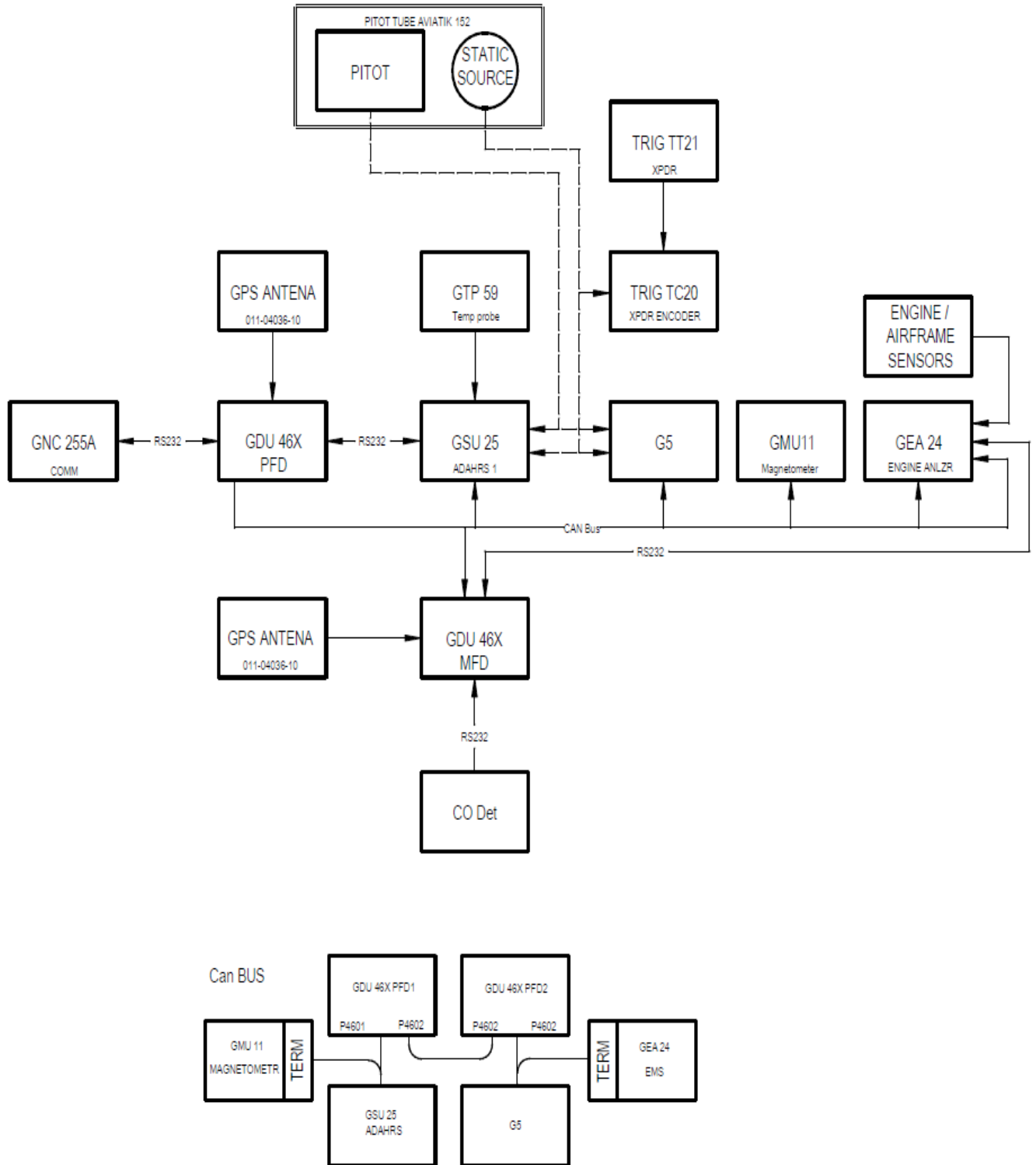






<b>Title</b>	<b>Dwg. No. ....</b>	<b>Page</b>
ELEKTROSYSTEM G3X	SI1200N.....	1-1
GNC 255A	SI1067N.....	1-2
PM 3000	SI1068N.....	1-3
ELT KANNAD 406 AF/INTEGRA AF	SI1070N.....	1-4
AILERON + ELEVATOR TRIM	SI1072N.....	1-5
FLAPS CONTROLL	SI1084N.....	1-6
STALL WARNING	SI1086N.....	1-7
BLOWERS	SI1087N.....	1-8
EXTERNAL LIGHTS	SI1141N.....	1-9
GDU 46X DISPLAY UNIT	SI1210N.....	1-10
GEA 24 ENGINE INDICATION SYSTEM	SI1211N.....	1-11
GSU ADAHRS	SI1212N.....	1-12
CO DETECTOR	SI1213N.....	1-13
GMU 11 MAGNETOMETR	SI1214N.....	1-14
G3X BACK UP BATTERY	SI1215N.....	1-15
POWER SUPPLY	SI1216N.....	1-16
ENGINE ROTAX 912	SI1217N.....	1-17
ANNUNCIATOR	SI1218N.....	1-18
GARMIN G5	SI1219N.....	1-19





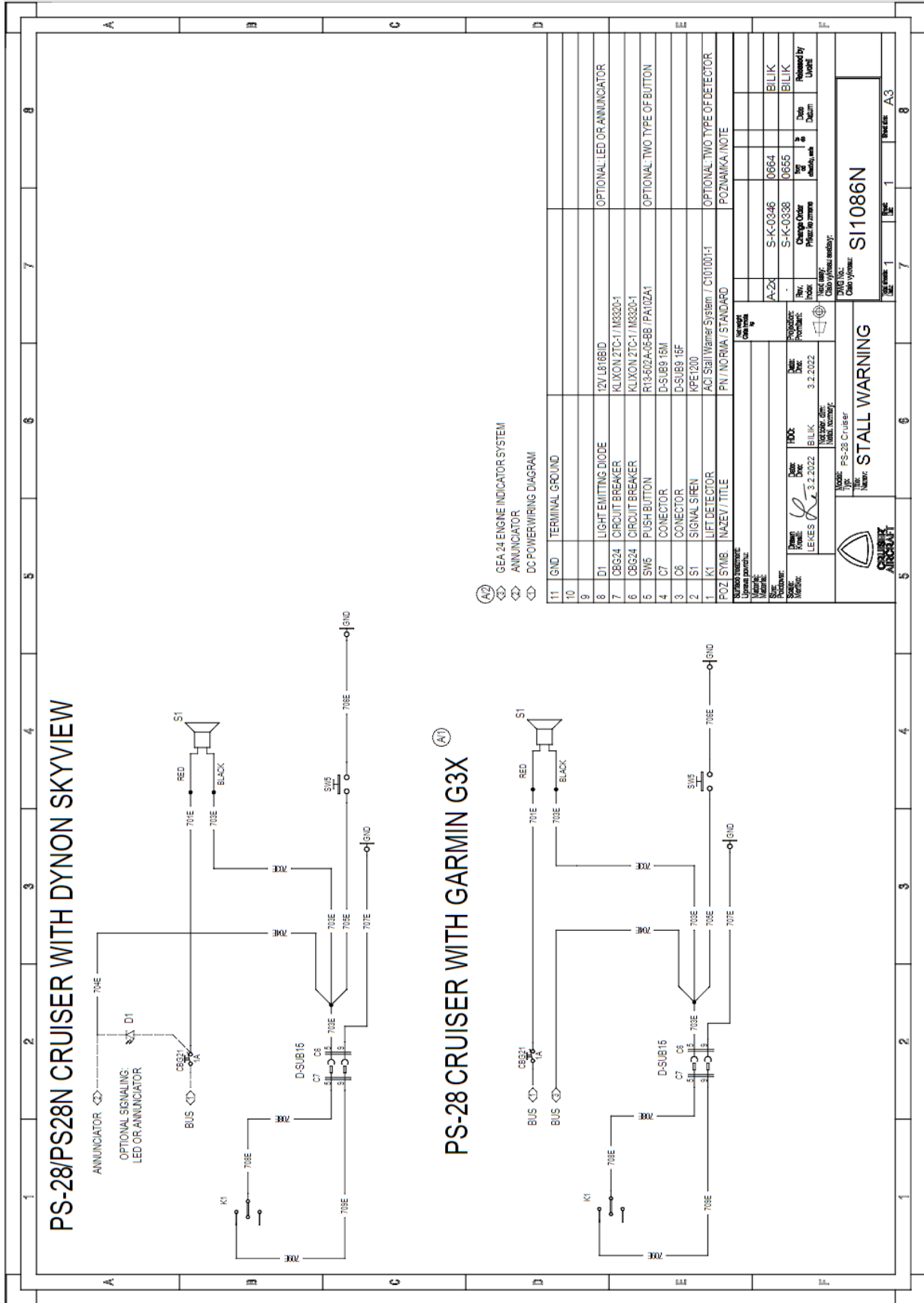


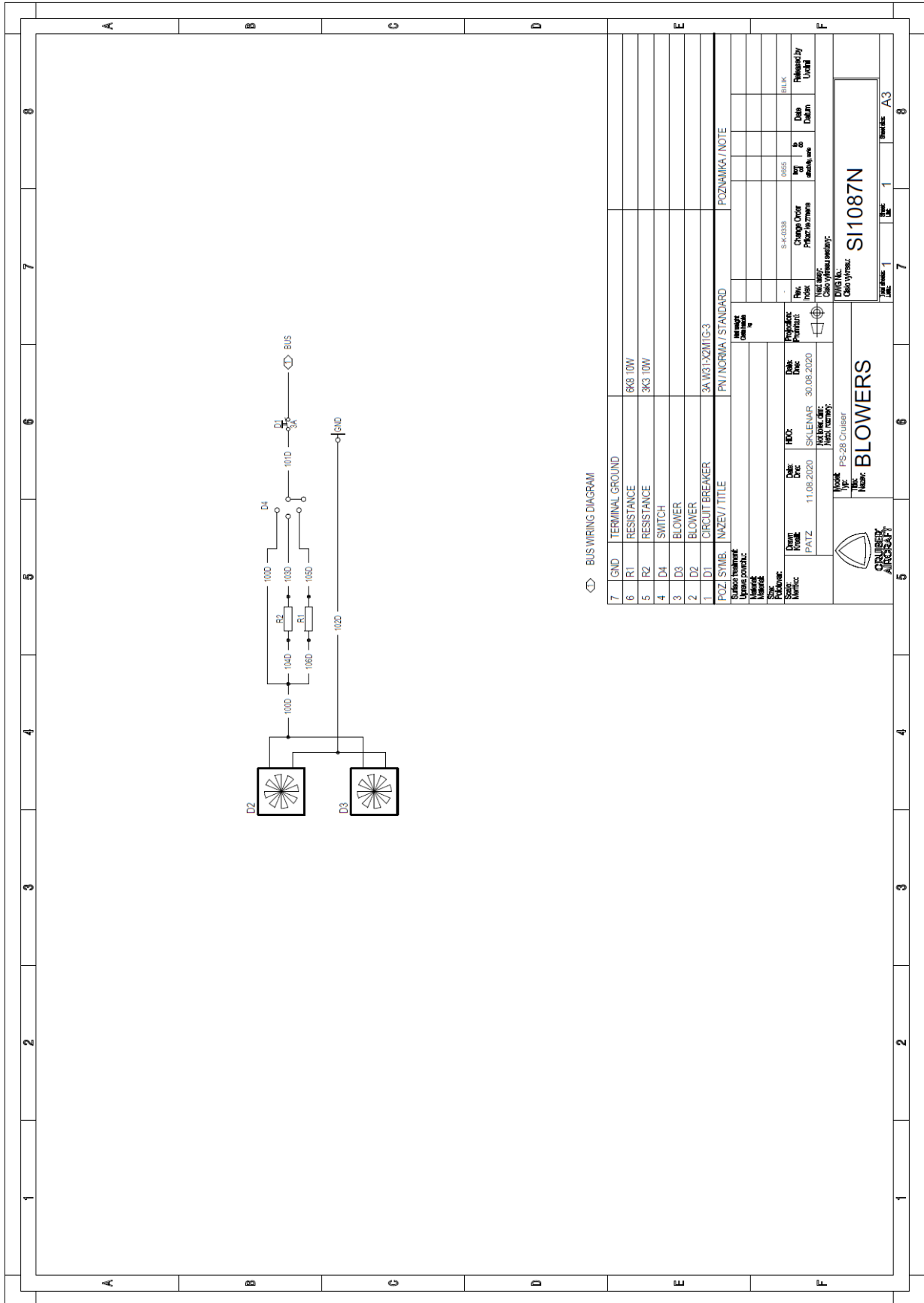




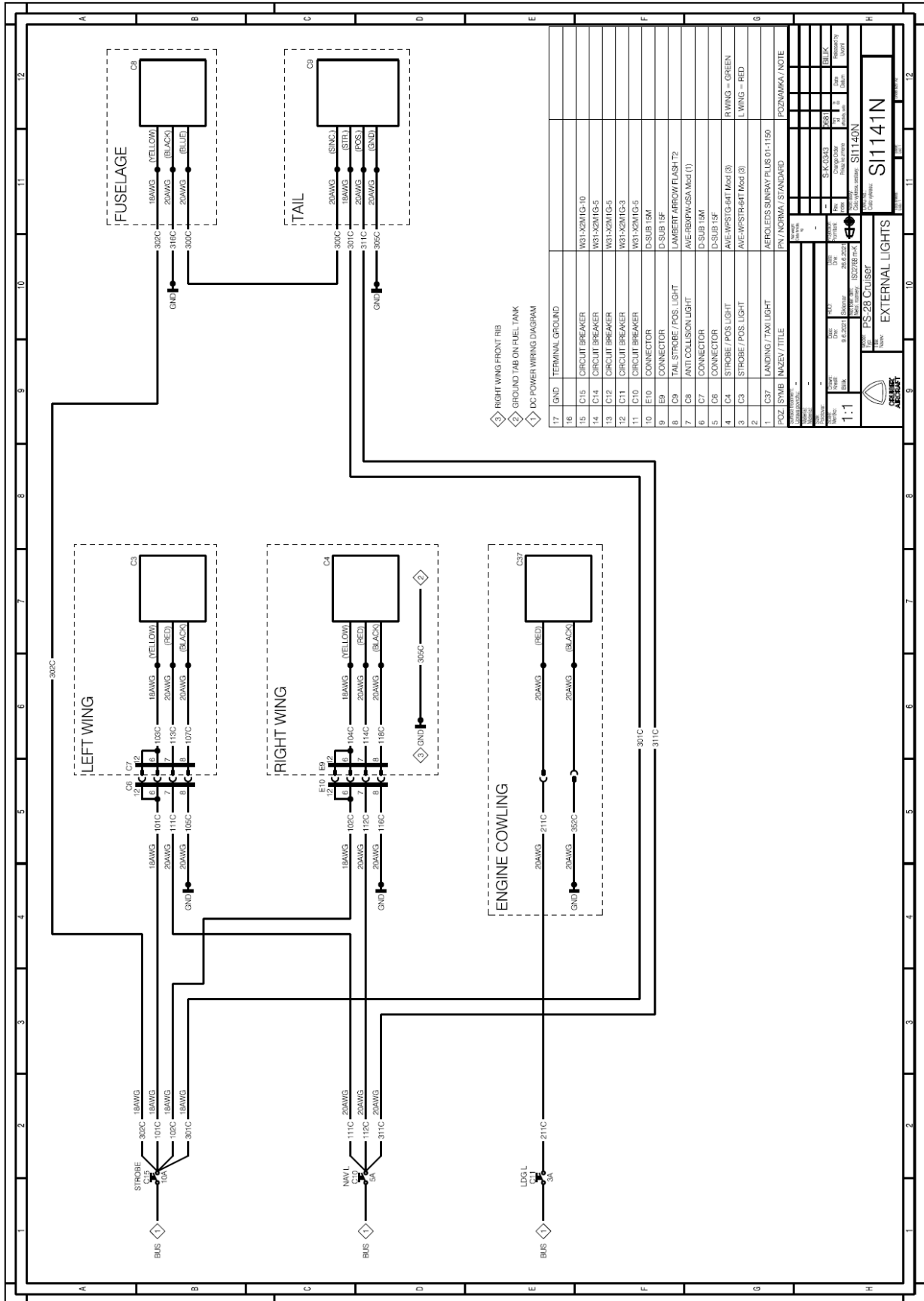


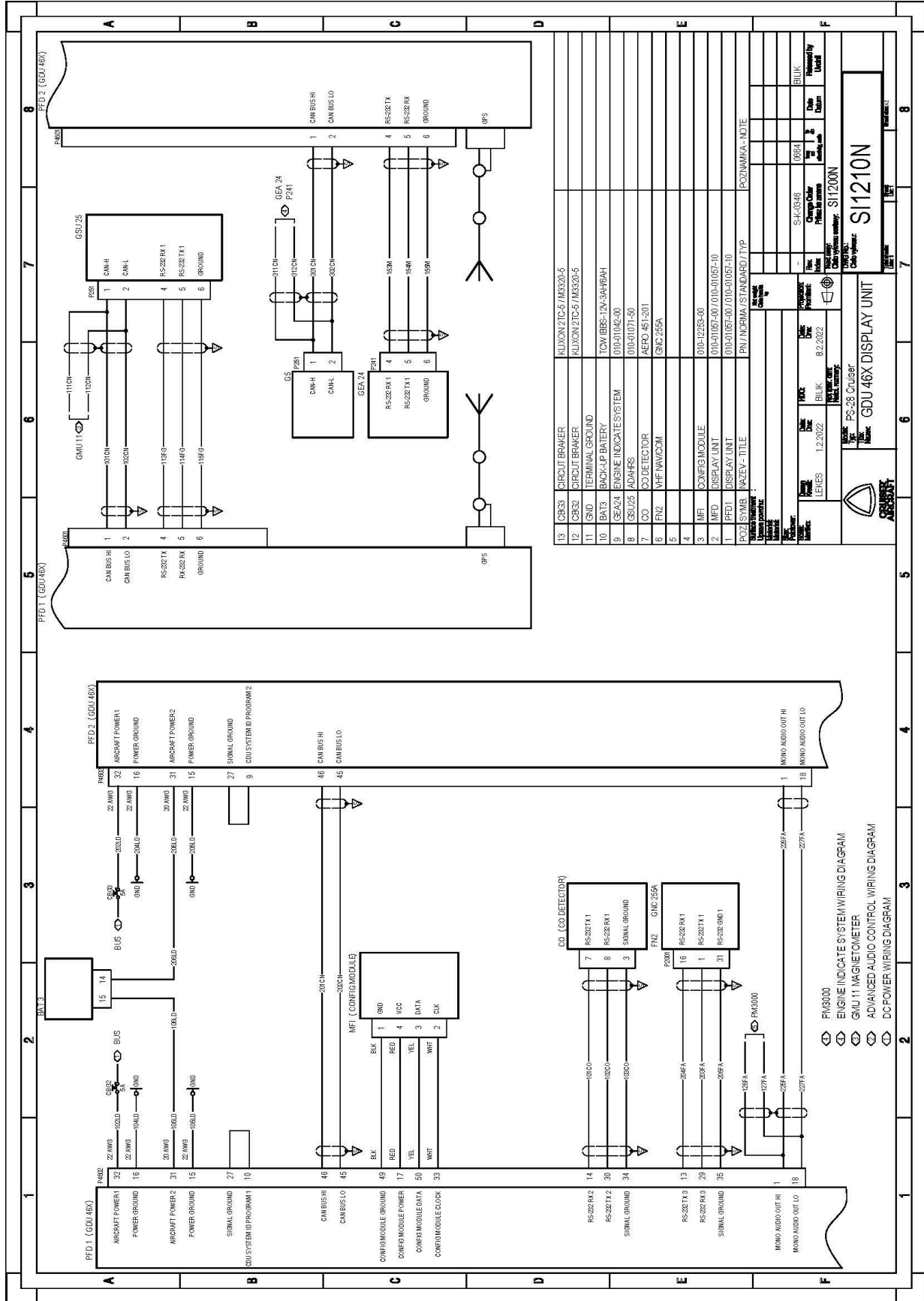




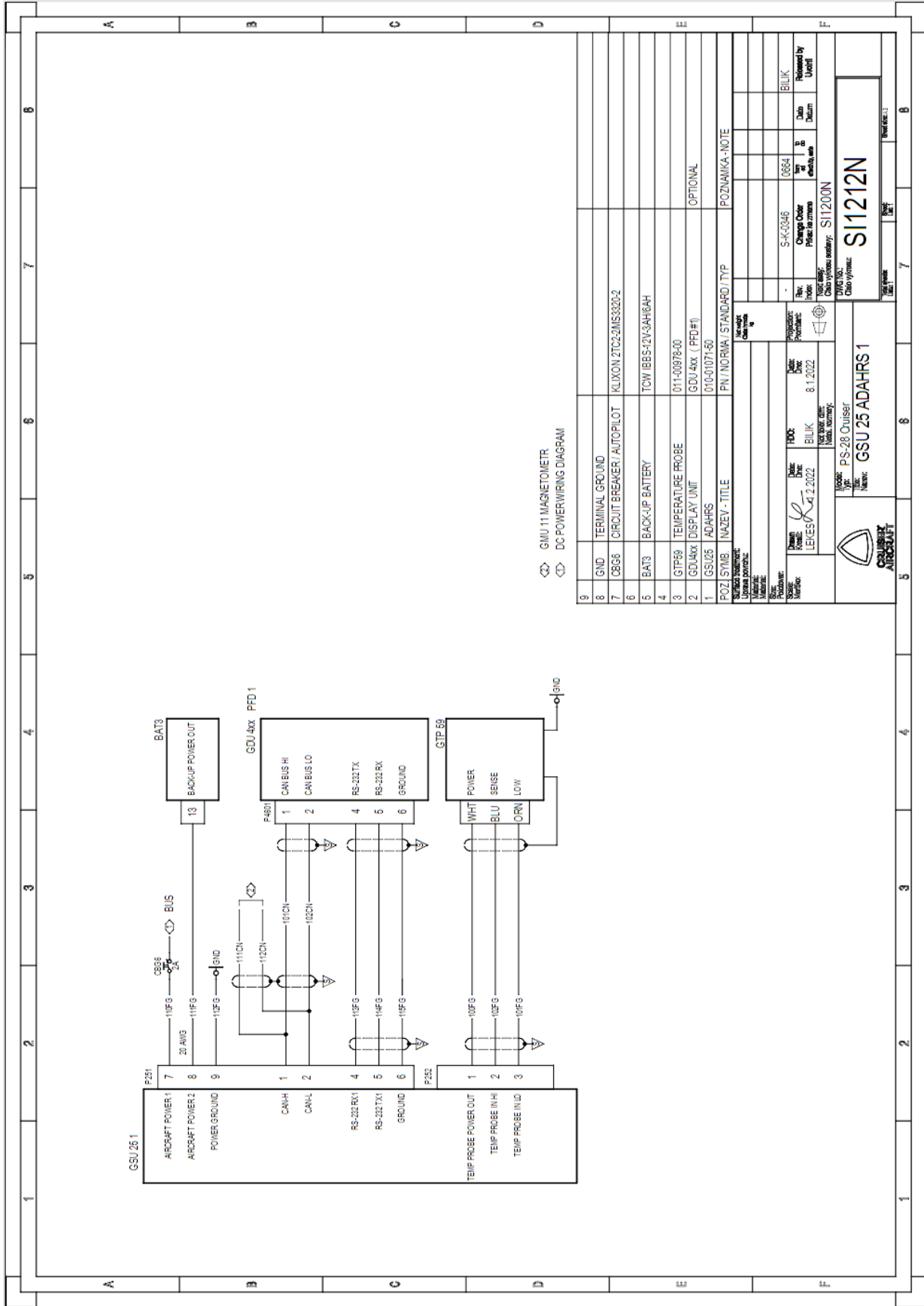












GMU 11 MAGNETOMETR.  
DC POWERWIRING DIAGRAM

9	GND	TERMINAL GROUND	
8	CB66	CIRCUIT BREAKER/AUTOPILOT	KLIXON.ZTC2.MS320-2
7	BAT3	BACK-UP BATTERY	TCW/IBS-12V-34H6AH
6	GTP50	TEMPERATURE PROBE	011-00978-00
5	GDU4xx	DISPLAY UNIT	GDU 4xx ( PFD #1)
4	GSU25	ADAHRS	010-01071-60
3	POZ/SYMB	INAZEV - TITLE	PN /NORMA / STANDARD /TYP

POZNAMKA-NOTE

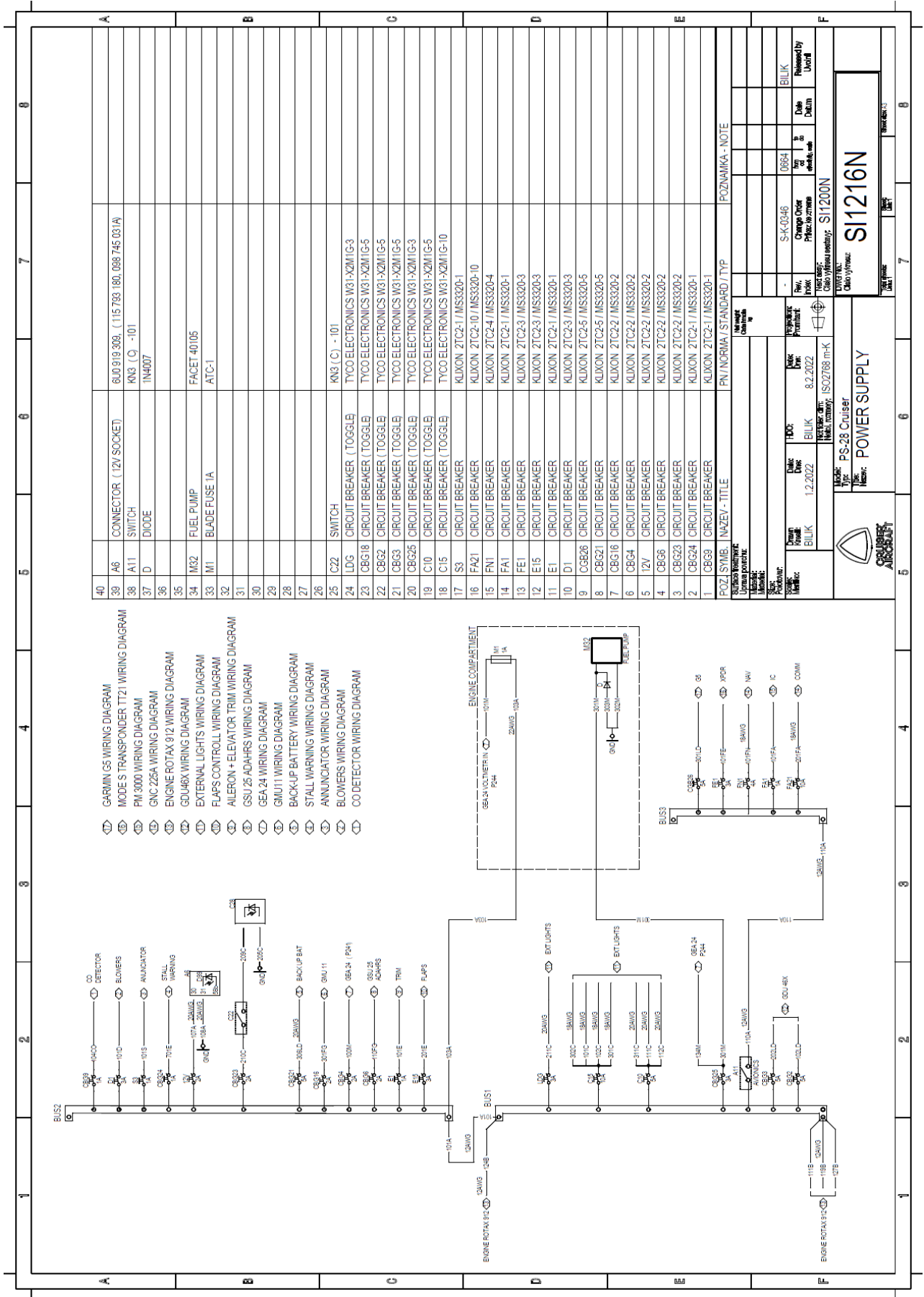
Drawn:	LEKES	Date:	8.1.2022
Checked:		Date:	
Approved:		Date:	
Released by:		Date:	

Mode: PS-28 Cruiser  
 Title: GSU 25 ADAHRS 1  
 Part no.: 3



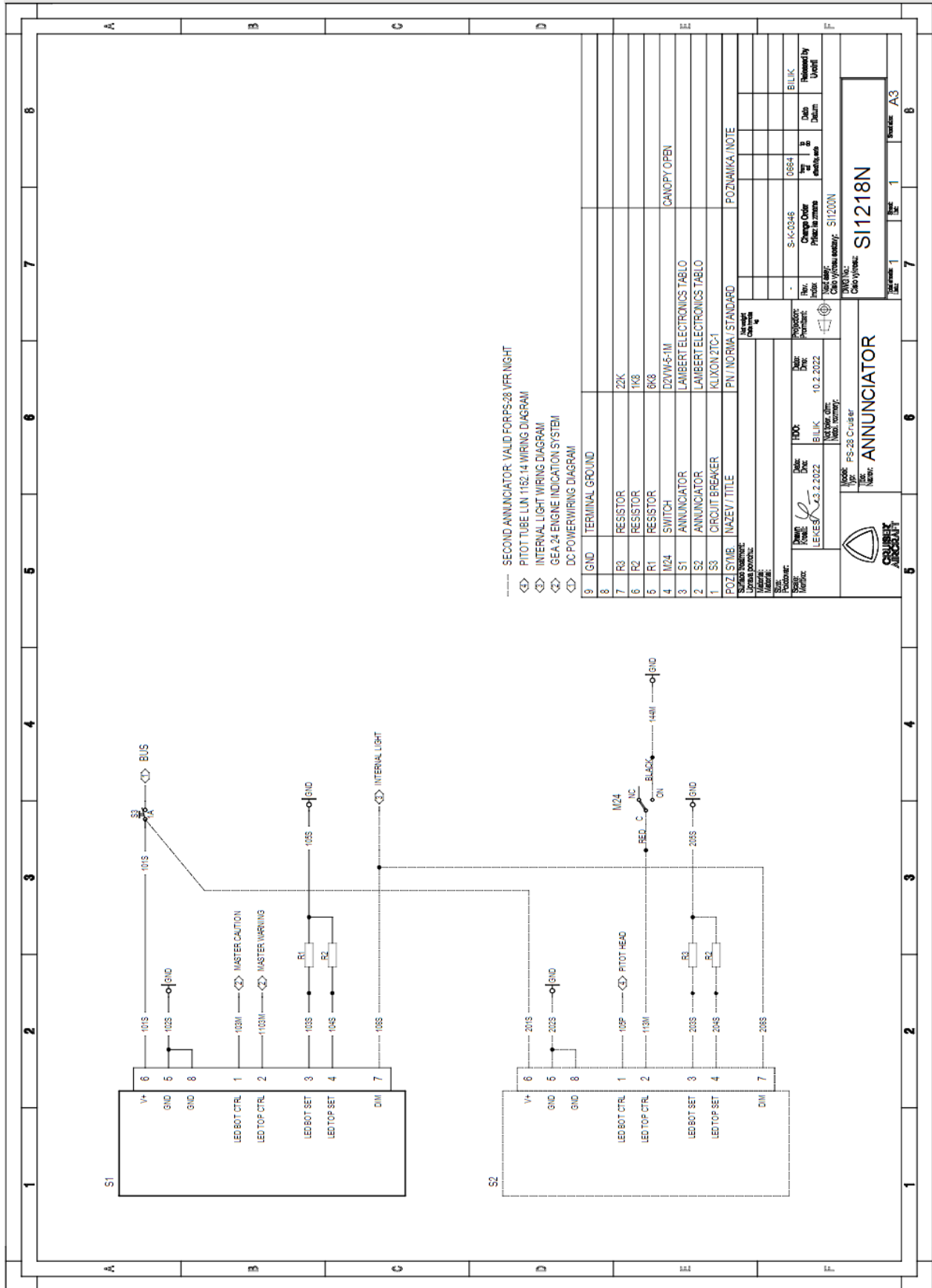
















**INTENTIONALLY LEFT BLANK**