



CZECH SPORT
AIRCRAFT

SERVICE BULLETIN

Czech Sport Aircraft a.s.

Na Záhonech 212,

686 04 Kunovice

Czech Republic

office@czechsportaircraft.com

No.: SB-CR-065

Date: 2018-12-07

Page: 1 of 7

Rev.: -

Date: -

MODEL AFFECTED:	PS-28 Cruiser, SportCruiser / PiperSport - operating under EASA control
SUBJECT:	Installation of improved canopy guidance during closing.
AIRCRAFT AFFECTED:	All PS-28 Cruiser / SportCruiser / PiperSport aircraft according to section "MODEL AFFECTED", as applicable.
COMPLIANCE:	According to the respective PS-28 Cruiser / SportCruiser / PiperSport aircraft owner's decision.

DESCRIPTION:

This Service Bulletin contains instructions for installation of the set for improved and easier guidance of the canopy on the locking hooks during canopy closing.

APPROVAL:

Installation of improved canopy guidance during closing has been approved by EASA under the Minor Change Approval No. 10067522, dated 15 November 2018.

AUTHORISATION TO PERFORM:

EASA Part M or Part 145 Maintenance organization.

REASON:

Installation of the set for improved and easier guidance of the canopy on the locking hooks during canopy closing according to this SB should prevent the possibility of potential incorrect guiding of the canopy on the locking hooks and possible local damage of the canopy frame during the aircraft operation.

MANPOWER:

Approximately 2 working hours.

SPECIAL TOOLS:

NAME	QUANTITY (pcs.)
Drilling machine (chuck up to a diameter of 10mm)	1
Drill bit, diameter of 2.4 mm	1
Drill bit, diameter of 3.2 mm	1
Cleco fasteners, diameter of 2.4 mm	2
Cleco fasteners, diameter of 3.2 mm	2
Pliers for cleco fasteners	1
Riveting pliers with a rotary head for pop rivets	1

WEIGHT AND BALANCE:

Insignificant effect.

ELECTRICAL LOAD DATA:

N/A

REFERENCES:

PS-28 Cruiser Maintenance Manual CR-MM-1-0-00, latest revision.

 CZECH SPORT AIRCRAFT	<h1>SERVICE BULLETIN</h1>	Czech Sport Aircraft a.s. Na Záhonech 212, 686 04 Kunovice Czech Republic office@czechsportaircraft.com	
		No.: SB-CR-065	Rev.: -
		Date: 2018-12-07	Date: -
Page: 2 of 7			

PUBLICATIONS AFFECTED:

PS-28 Cruiser Maintenance Manual CR-MM-1-0-00, latest revision.

MATERIAL USED:

NAME	QUANTITY (pcs)
Protective metal plate SF0354N	2
Guiding metal plate left SF0355L	1
Guiding metal plate right SF0355P	1
Pop rivet with sunk head Ø 3,2 mm (16040412)	14
Pop rivet with round head Ø 2,4 mm (10312406)	10
Polyurethane Adhesive Sealant (3M Marine Adhesive Sealant 5200 or Emfimastic PU 50)	1
Masking tape	1
Cleaning solution	1
Paper towel	1

COSTS:

To be covered by the aircraft owner / operator.

ACCOMPLISHMENT INSTRUCTIONS:

CAUTION:

- a) Installation of protective metal plates SF0354N and guiding metal plates SF0355L,P according to this bulletin is situated inside the cockpit in the area of the cabin locking mechanism.
- b) It is therefore necessary to protect the cabin interior and the canopy locking mechanism against dirt during drilling the holes for rivets.
- c) Cleaning solution (alcohol) used for degreasing the respective surfaces of the protective metal plates and guiding metal plates, as well as the polyurethane adhesive sealant, must not get in contact with the canopy acrylic glass.



SERVICE BULLETIN

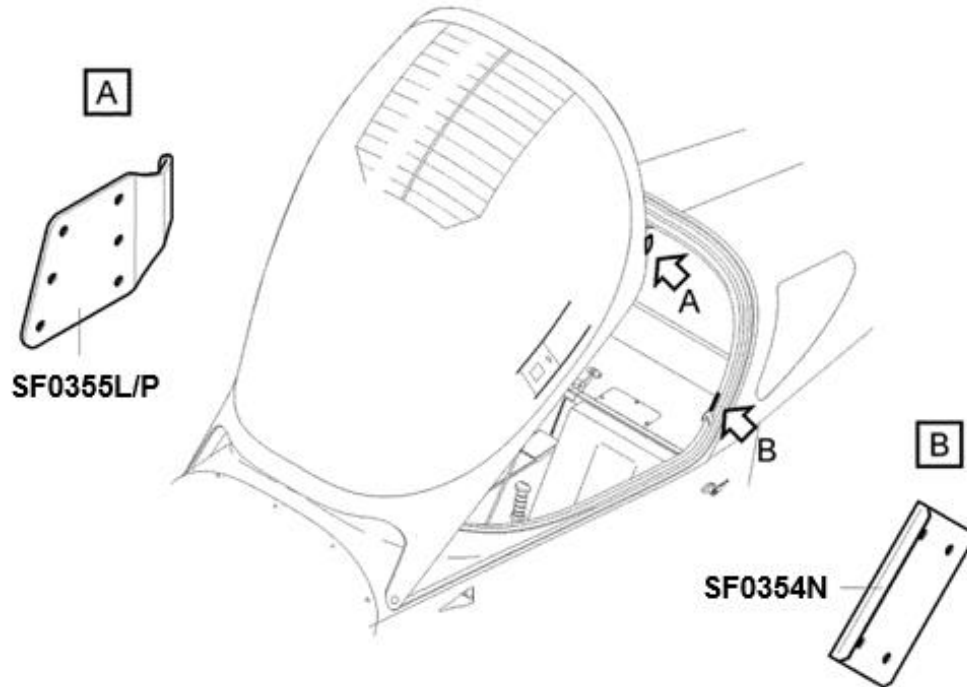


Fig. 1 - A- guiding metal plate, B- protective metal plate

Work procedure:

- 1) Set the protective metal plate SF0354N on the left side of the fixed frame, 31mm aft of the bolt head, (see Fig. 2, Pos. 1) and fix it with masking tape. Drill four holes \varnothing 2.4 mm according to the holes in the protective metal plate and deburr the drilled holes.



SERVICE BULLETIN

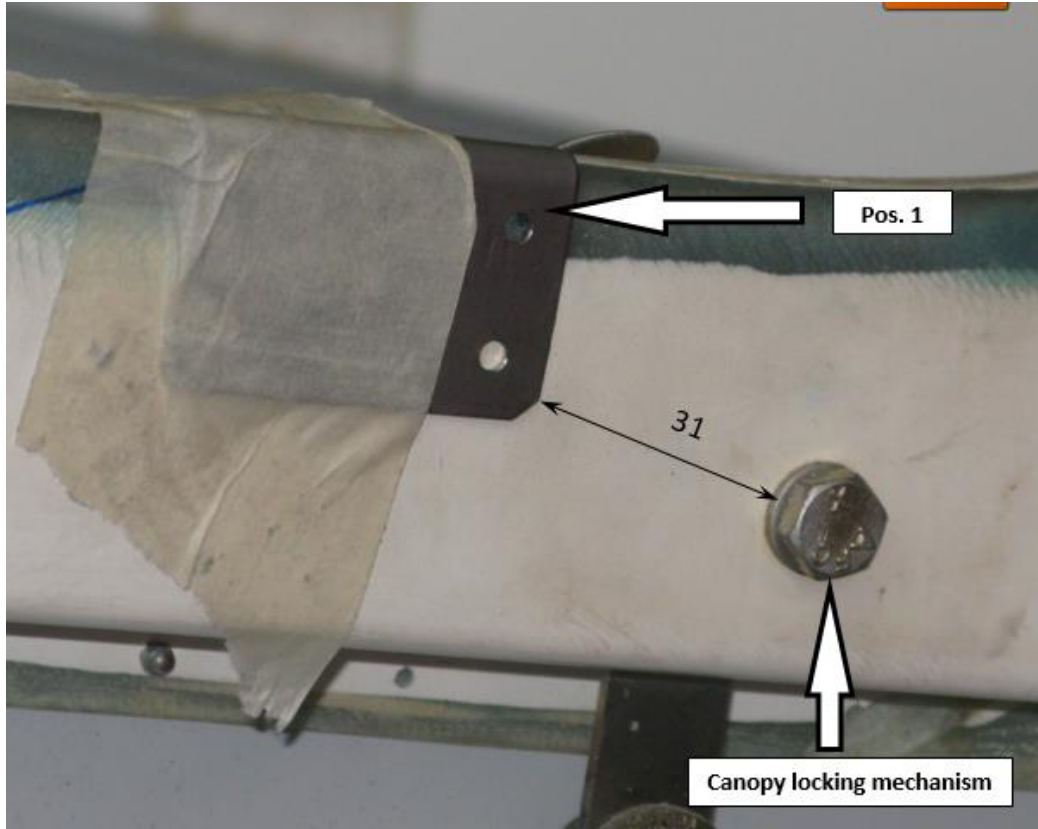


Fig. 2 - Positioning of the protective metal plate on the fixed frame (view of the left side of the cockpit)

- 2) Degrease the respective contact areas of the protective metal plate and of the left side of the fixed frame by using cleaning solution (alcohol), clean the degreased areas by paper towel and let them dry. Apply the polyurethane adhesive sealant to the corresponding contact surface of the protective stop, place it on the left side of the fixed frame and attach it to the frame by 4 rivets \varnothing 2.4 mm (see Fig. 3). Remove overflows of the polyurethane adhesive sealant.

 CZECH SPORT AIRCRAFT	<h1>SERVICE BULLETIN</h1>	Czech Sport Aircraft a.s. Na Záhonech 212, 686 04 Kunovice Czech Republic office@czechsportaircraft.com
No.: SB-CR-065		Rev.: -
Date: 2018-12-07		Date: -
Page: 5 of 7		

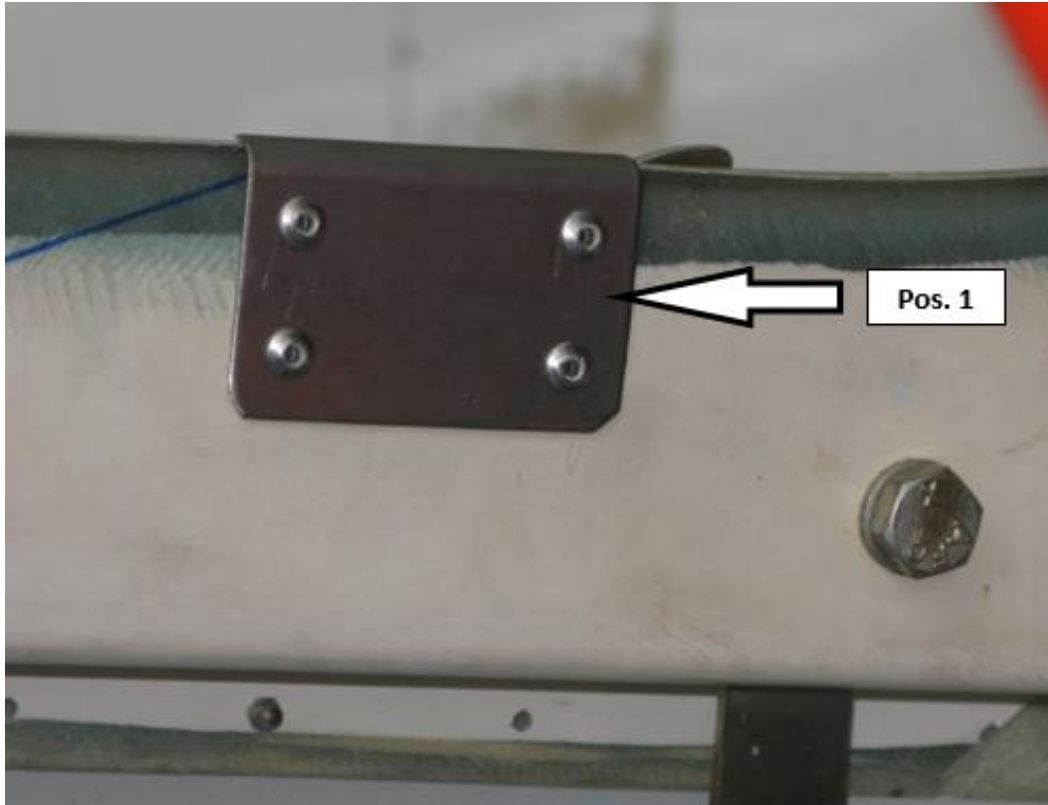


Fig. 3 - Fixing of protective metal plate on the fixed frame (view of the left side of the cockpit)

- 3) Close and lock the canopy.
- 4) With the canopy closed and locked, from the inside of the cabin, set the guiding metal plate on the left side of the movable frame and on the protective metal plate attached to the fixed frame (see Fig. 4, Pos. 2). Fix the guiding metal plate in the set position by masking tape. Drill six holes \varnothing 3.2 mm into the movable frame according to the holes in the guiding metal plate and deburr the drilled holes (see Fig. 4).



SERVICE BULLETIN

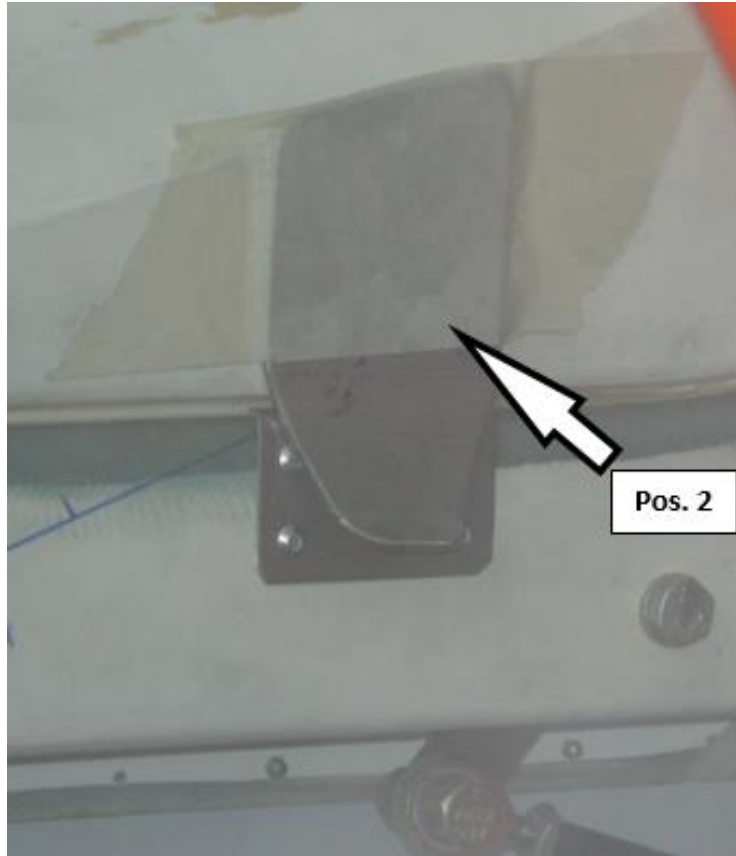


Fig. 4 - Positioning of the guiding metal plate on the movable frame (view of the left side of the cockpit)

CAUTION:

The guiding metal plate has to be adjusted on the movable frame and on the protective metal plate attached to the fixed frame in such a way that it is slightly touching the protective metal plate in the closed and locked position of the canopy and, at the same time, that the guiding metal plate hook does not touch the rivets fixing the protective metal plate to the fixed frame.

- 5) Degrease the respective contact areas of the guiding metal plate and on the left side of the movable frame by using cleaning solution (alcohol), clean the degreased areas by paper towel and let them dry. Apply the polyurethane adhesive sealant to the corresponding contact surface of the guiding metal plate, place it on the left side of the movable frame and attach it to the frame by 6 rivets \varnothing 3.2 mm (see Fig. 5). Remove overflows of the polyurethane adhesive sealant.



SERVICE BULLETIN

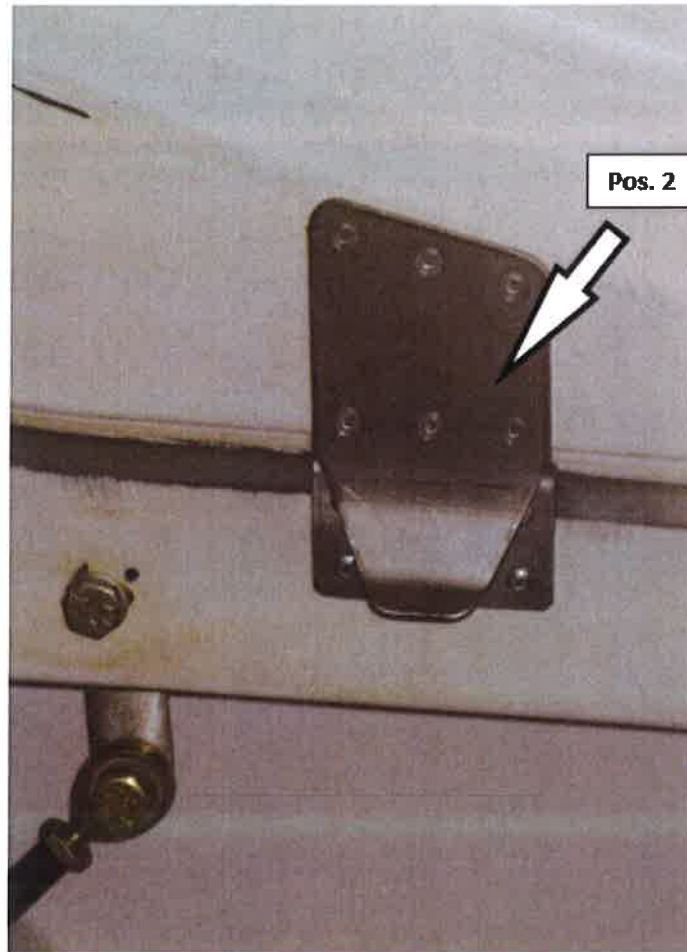


Fig. 5 - Fixing of the guiding metal plate on the movable frame (view of the left side of the cockpit)

- 6) Repeat the procedure mentioned above in articles 1) through 5) and install the protective metal plate and the guiding metal plate on the right side of the cabin.
- 7) Check the closing and locking of the canopy.
- 8) Complete the aircraft records (log book) to reflect compliance with this Service Bulletin.
- 9) Thereby, execution of this Service Bulletin is duly completed.

APPROVAL:

This SB was approved by:

Title	Head of the Design Organisation	Airworthiness Manager
Name	Jiří Konečný	Miroslav Koukal
Hand written signature		