



CRUISER  
AIRCRAFT

No.: SB-CR-098

DATE: 2022-04-29

PAGE: 1/8

# SERVICE BULLETIN

Czech Aircraft Group s.r.o.  
Na Záhonech 212  
686 04 Kunovice  
Czech Republic  
info@cruiseraircraft.cz

REV.: 1

DATE: 2023-05-15

<b>MODEL AFFECTED:</b>	PS-28 Cruiser / PS-28N Cruiser
<b>SUBJECT:</b>	Performance seat installation
<b>AIRCRAFT AFFECTED:</b>	All PS-28 Cruiser and PS-28N Cruiser aircraft
<b>COMPLIANCE:</b>	According to the owner's decision

**DESCRIPTION:**

This Service Bulletin contains instructions how to replace the old seats with a new one.

**AUTHORISATION TO PERFORM:**

Part M or Part 145 Maintenance organization

**MANPOWER:**

4 hours

**SPECIAL TOOLS:**

Common tools for aircraft maintenance.

**WEIGHT AND BALANCE:**

Affected

**ELECTRICAL LOAD DATA:**

N/A

**PUBLICATIONS AFFECTED:**

Pilot's Operating Handbook (POH)

**MATERIAL AND COSTS:**

All costs to be covered by the aircraft owner / operator.



CRUISER  
AIRCRAFT

No.: SB-CR-098

DATE: 2022-04-29

PAGE: 2/8

# SERVICE BULLETIN

Czech Aircraft Group s.r.o.  
Na Záhonech 212  
686 04 Kunovice  
Czech Republic  
info@cruiseraircraft.cz

REV.: 1

DATE: 2023-05-15

## MATERIAL:

ITEM No.	NOMENCLATURE	DESCRIPTION	QUANTITY
001	SF0910N	Shell Upholstered Seat	2 pcs
002	31110657	Screw	4 pcs
003	31360003	Plastic Washer	4 pcs
004	3121E663	Nut Plate	4 pcs
005	SF0908P	Inner Cover Plate	1 pc
006	SF0908L	Inner Cover Plate	1 pc
007	SF0909P	Outer Cover Plate	1 pc
008	SF0909L	Outer Cover Plate	1 pc
009	3171T038	Rivet	8 pcs
010	3171T032	Rivet	8 pcs
011	3171T030	Rivet	30 pcs
012	SF0906N	Hook upper	1 pc
013	SF0907N	Hook lower	1 pc



Fig. 1: New seat design

# SERVICE BULLETIN

## ACCOMPLISHMENT INSTRUCTIONS:

- 1) Move the aircraft to a place suitable to perform the work.
- 2) Remove the original seats (see MM, chapter 7).
- 3) Rivet nuts that were used to secure the original seats will no longer be used. But they will stay in place.
- 4) Fit seats to the place with hooks 012 and 013.
- 5) Mark the positions of hooks.
- 6) Remove the seats and rivet the hooks with rivets 011 (see Fig. 2).
- 7) Drill the highlighted rivets according to (see Fig. 3).
- 8) Rivet the inner (006) and outer (008) cover plate (see Fig. 4).

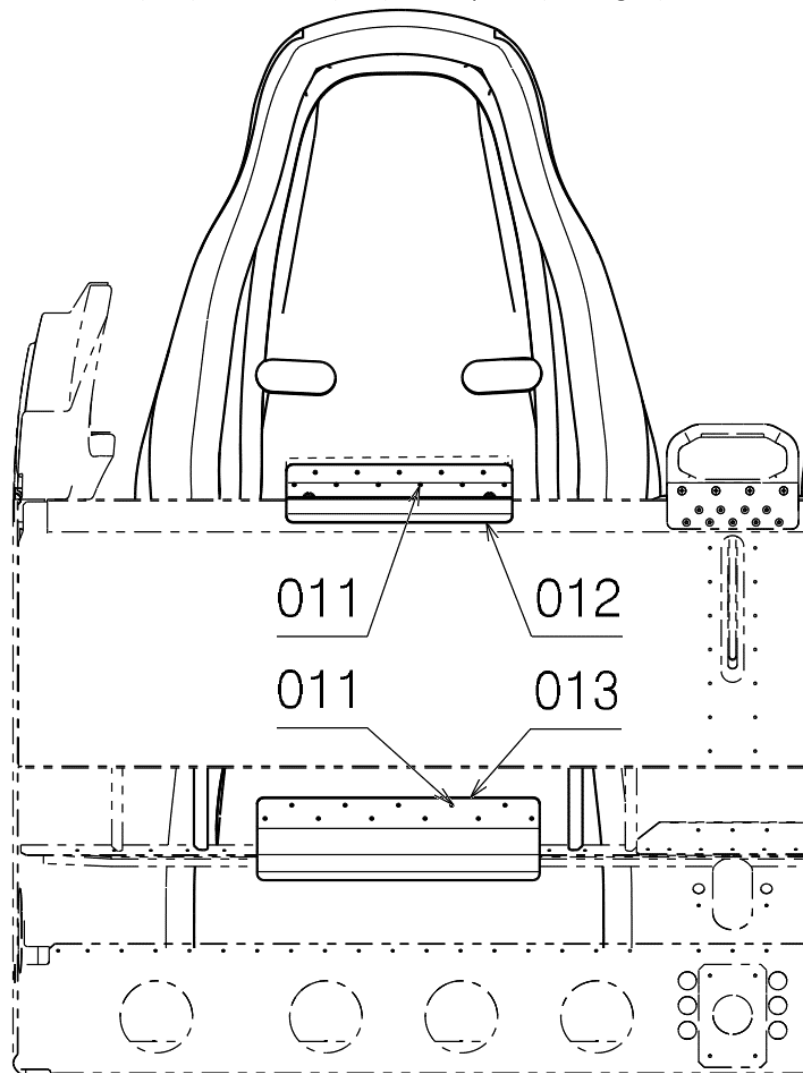


Fig. 2: Rivetted hooks

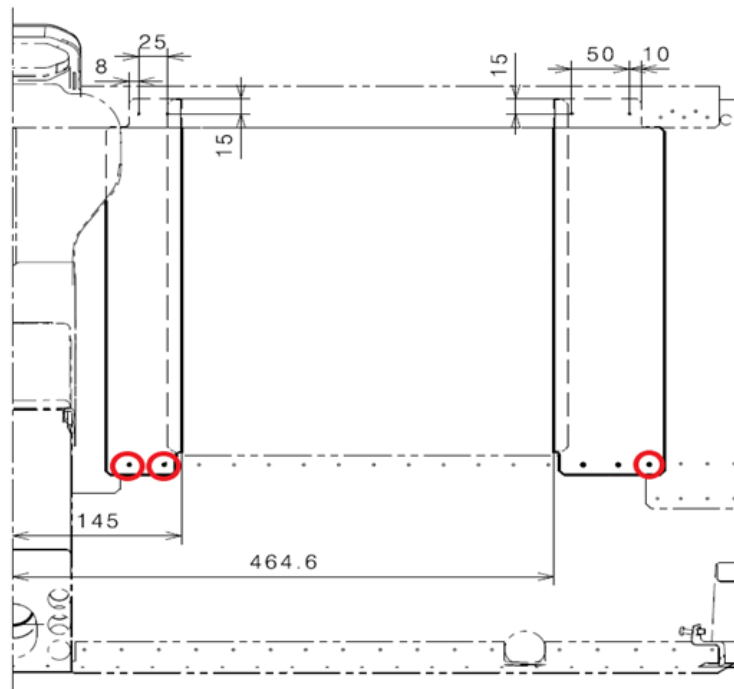


Fig. 3: Position of cover plates and rivets

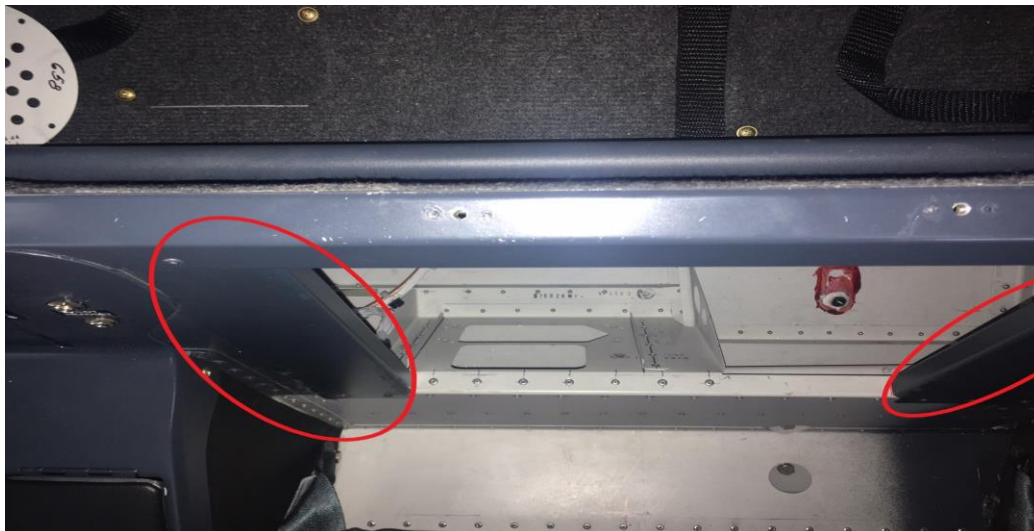


Fig. 4: Inner and outer cover plate (item 005, 006, 007, 008)

- 9) If there is an autopilot servo bracket in the aircraft, it is necessary to file it in the entire width of the lower reinforcement (see Fig. 5 **Chyba! Nenalezen zdroj odkazů.**).

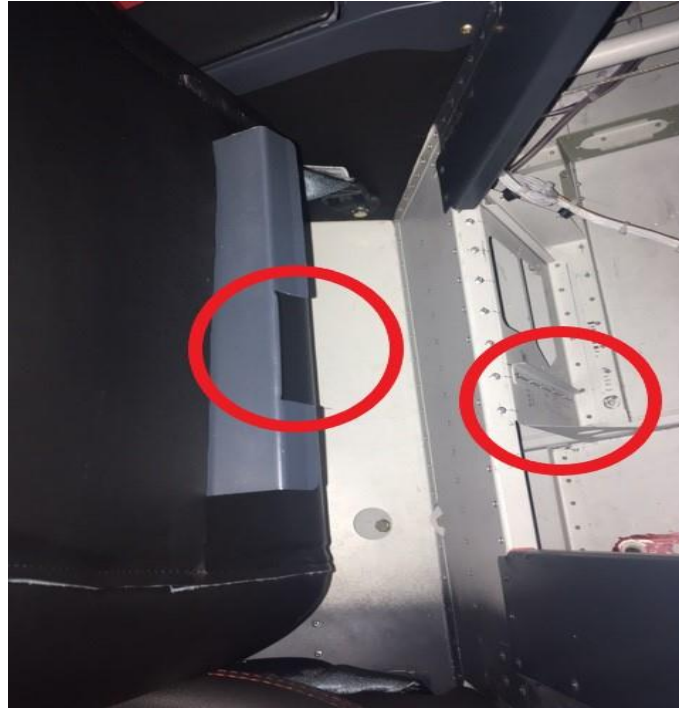


Fig. 5: Autopilot console and necessary cut out in seat lower locker (attachment)

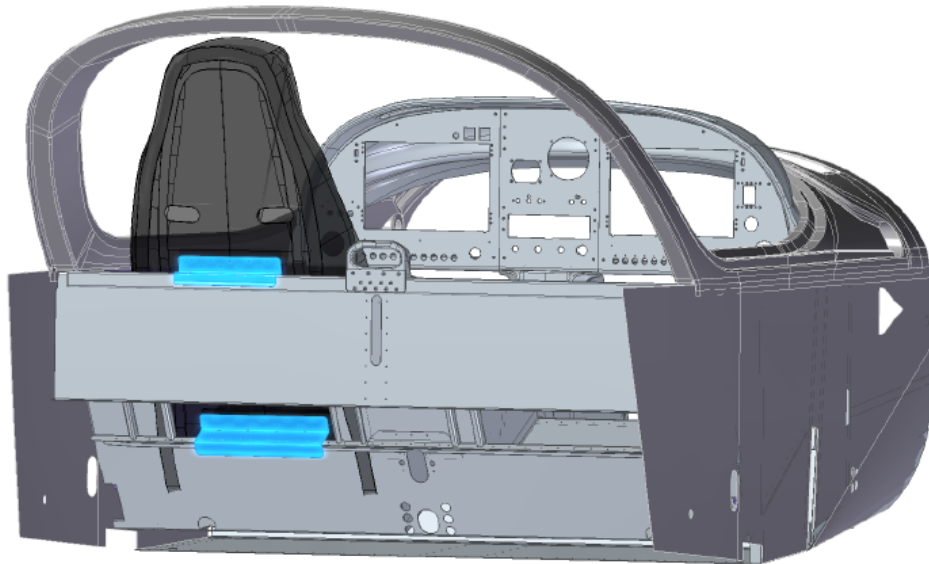


Fig. 6: Upper and lower seat locker (attachment)

- 10) Place the new seats to the aircraft.
- 11) Make sure that the upper and lower hooks are hooked behind the edges of the backrest.
- 12) Pre-drill holes through the upper hook and upper back brace. Use a 2,5mm diameter drill bit. The location of the holes is shown in (see Fig. 7, Fig. 8 and Fig. 9)

# SERVICE BULLETIN

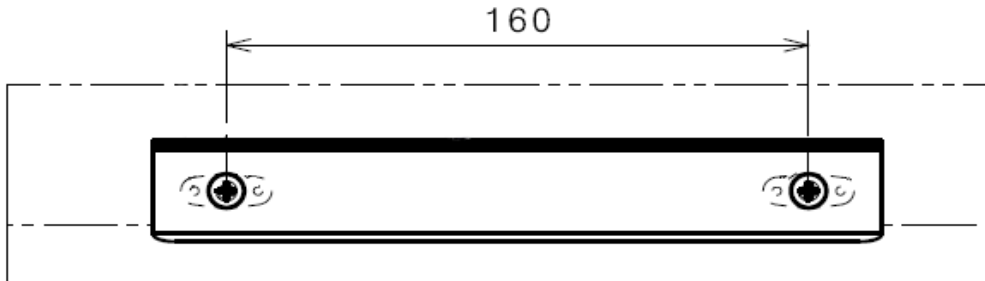


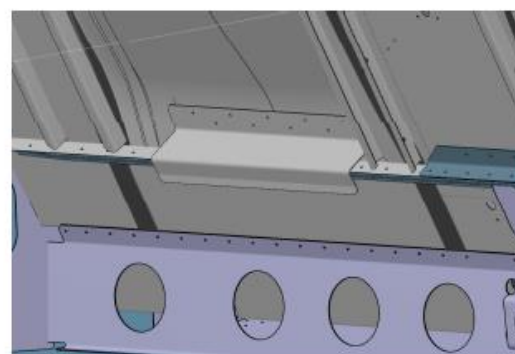
Fig. 7: Position of nutplates and screws



Fig. 8: Holes in the upper locker (attachment)



Locker SF0906N (upper)  
**secured by two Bolts**



Locker SF0907N (lower)

Fig. 9: Upper and lower seat locker (attachment)



# SERVICE BULLETIN

- 13) Remove the new seat from the aircraft.
- 14) Drill pre-drilled holes. There must be a 5mm diameter hole in the seat hook and in backrest reinforcement (see Fig. 10).
- 15) Drill countersink into backrest reinforcement for rivet head.



Fig. 10: Holes in the upper hook and backrest wall member

- 16) Place the nut plates (004) into the backrest brace.



Fig. 11: Nut plates

- 17) Place the new seats in the aircraft.
- 18) Make sure that the seat sits on the seating surfaces and does not hang on the upper or lower hook.



CRUISER  
AIRCRAFT

No.: SB-CR-098

DATE: 2022-04-29

PAGE: 8/8

# SERVICE BULLETIN

Czech Aircraft Group s.r.o.  
Na Záhonech 212  
686 04 Kunovice  
Czech Republic  
info@cruiseraircraft.cz

REV.: 1

DATE: 2023-05-15

- 19) Screw in the screws (002) into rivet nuts through upper hook and tighten them.
- 20) Install seat belts. Find two holes in seat backrest. Push the shoulder seat belts through the holes in backrest.
- 21) Put the aircraft in working order and airworthy condition.
- 22) Weigh the aircraft and calculate the centre of gravity, write data to the POH. If the empty aircraft C.G. value exceeds the permissible tolerance, contact aircraft manufacturer.
- 23) Update aircraft records to reflect compliance with this Service Bulletin.

## APPROVAL:

This Service Bulletin has been approved by:

<b>TITLE:</b>	Head of Design Organisation	Airworthiness Manager
<b>NAME:</b>	David Bilík	Jan Pejchar
<b>HAND WRITTEN SIGNATURE:</b>		