

 CZECH SPORT AIRCRAFT	<h1>SERVICE BULLETIN</h1>	Czech Sport Aircraft a.s. Na Záhonech 212, 686 04 Kunovice Czech Republic office@czechsportaircraft.com	
		No.: SB-SC-043	Rev.: -
		Date: 2017-10-03 Page: 1 of 6	Date: -

MODEL AFFECTED:	SportCruiser
SUBJECT:	Modification of the Aircraft Category Setting
AIRCRAFT AFFECTED:	All SportCruiser aircraft equipped with Dynon SkyView System with integrated transponder SV-XPNDR-261/262, see the list in the Supplement No.1.
COMPLIANCE:	Completion of this Service Bulletin is mandatory and must be performed as soon as possible. Instructions, if not followed, may lead to incorrect aircraft category identification by the ADS-B Performance Monitor system.

DESCRIPTION:

This Service Bulletin contains instructions for modification of the aircraft category setting in the transponder SETUP MENU.

AUTHORISATION TO PERFORM:

USA: Repairman (LS-M) or Mechanic (A&P)

REASON:

Due to the incorrect aircraft category identification by the Air Traffic Control, the aircraft category must be changed from the "ULTRALIGHT" to the "LIGHT <15,000 LB" in the SV-XPNDR-261 transponder setup.

MANPOWER:

Approximately 0.5 working hours.

SPECIAL TOOLS:

Suitable aircraft battery charger (4A or higher), flat screwdriver.

WEIGHT AND BALANCE:

Not affected.

ELECTRICAL LOAD DATA:

Not affected.

REFERENCES:

N/A

PUBLICATIONS AFFECTED:

N/A

MATERIAL:

N/A

COSTS:

To be covered by the aircraft owner / operator.

 CZECH SPORT AIRCRAFT	<h1>SERVICE BULLETIN</h1>	Czech Sport Aircraft a.s. Na Záhonech 212, 686 04 Kunovice Czech Republic office@czechsportaircraft.com	
		No.: SB-SC-043	Rev.: -
		Date: 2017-10-03 Page: 2 of 6	Date: -

List of the figures 1 to 6 below:

Figure	NAME
1	Setup Menu
2	Transponder Setup link
3	Transponder Setup menu
4	Aircraft Category menu
5	Aircraft Category selection
6	Aircraft Category confirmation

ACCOMPLISHMENT INSTRUCTIONS:

To accomplish this bulletin, carry out the following steps:

1. Move the aircraft to a suitable place to perform the work.
2. Remove the engine upper cowling (see the SC-AMM-1-0-00, the latest revision).
3. Connect a suitable aircraft battery charger (4A or higher) to the aircraft battery poles. Turn the charger on.
4. Turn the "MASTER BAT", "EFIS1", "EFIS2" (if installed) and the "AVIONICS" switches on and wait until the display/displays boots/boot up.
5. Push the buttons 7 + 8 (from the left) on the EFIS 1 display simultaneously for a few seconds to enter the SETUP MENU, see Fig. 1.

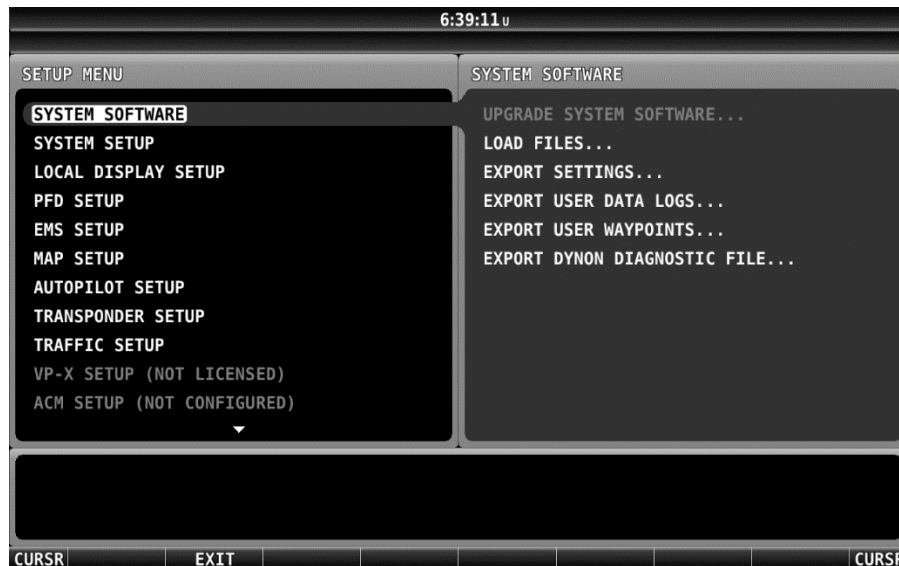


Figure 1 – SETUP MENU

 CZECH SPORT AIRCRAFT	<h1>SERVICE BULLETIN</h1>	Czech Sport Aircraft a.s. Na Záhonech 212, 686 04 Kunovice Czech Republic office@czechsportaircraft.com	
		No.: SB-SC-043	Rev.: -
		Date: 2017-10-03	Date: -
		Page: 3 of 6	

- Use the left or the right joystick on the EFIS 1 display, roll down to the TRANSPONDER SETUP (see Fig. 2) and press the joystick to enter this setup, see Fig. 3.



Figure 2 – Transponder Setup link

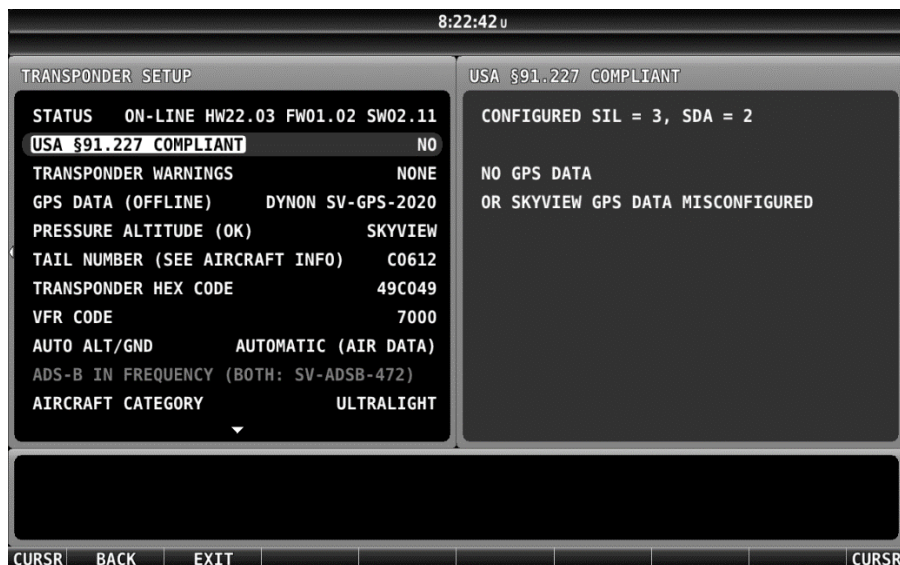


Figure 3 – Transponder SETUP MENU

 CZECH SPORT AIRCRAFT	<h1>SERVICE BULLETIN</h1>	Czech Sport Aircraft a.s. Na Záhonech 212, 686 04 Kunovice Czech Republic office@czechsportaircraft.com	
		No.: SB-SC-043	Rev.: -
		Date: 2017-10-03	Date: -
		Page: 4 of 6	

- Use the left or the right joystick on the EFIS 1 display, roll down to the AIRCRAFT CATEGORY item (see Fig. 4) and press the joystick to enter this setup.



Figure 4 – Aircraft category menu

- Use the joystick on the EFIS 1 display and select the “LIGHT <15,000 LB” category, see Fig. 5. Press the ACCEPT button on the display, see Fig. 6.



Figure 5 – Aircraft Category selection



SERVICE BULLETIN



Figure 6 – Aircraft Category confirmation

9. On the EFIS 1 display, press the EXIT button to close the SETUP MENU.
10. If the second (EFIS 2) display is installed on the board, continue with the next step. If it is not installed, continue with the step 13.
11. Wait a few seconds. On the EFIS 2 display, repeat the steps 5 to 7 and check if the category setting (LIGHT <15,000 LB) from the EFIS 1 was transferred to the EFIS 2 correctly. If not, repeat the steps 8 and 9 on the EFIS 2 display.
12. On the EFIS 2 display, press the EXIT button to close the SETUP MENU.
13. If all is correct, turn the “MASTER BAT”, “EFIS1”, “EFIS2” (if installed) and the “AVIONICS” switches off.
14. Disconnect the battery charger from the aircraft battery poles.
15. Mount the engine upper cowling (see the SC-AMM-1-0-00, the latest revision).
16. Complete the aircraft records (log book) to reflect compliance with this bulletin.

 CZECH SPORT AIRCRAFT	<h1>SERVICE BULLETIN</h1>	Czech Sport Aircraft a.s. Na Záhonech 212, 686 04 Kunovice Czech Republic office@czechsportaircraft.com	
		No.: SB-SC-043	Rev.: -
		Date: 2017-10-03	Date: -
Page: 6 of 6			

SUPPLEMENT NO.1

List of the affected SportCruiser aircraft: *)

C0413, C0414, C0453, C0460, C0462, C0463, C0464, C0467, C0471, C0480, C0481, C0483, C0484, C0486, C0491, C0492, C0493, C0494, C0495, C0496, C0497, C0499, C0501, C0503, C0505, C0522, C0523, C0524, C0525, C0526, C0527, C0528, C0529, C0530, C0534, C0535, C0536, C0537, C0538, C0539, C0540, C0541, C0542, C0543, C0544, C0545, C0549, C0550, C0553, C0556, C0557, C0558, C0559, C0560, C0561, C0562, C0563, C0564, C0565, C0566, C0567, C0568, C0569, C0570, C0571, C0572, C0573, C0574, C0575, C0576, C0577, C0578, C0579, C0580, C0581, C0582, C0583, C0584, C0585, C0586, C0587, C0588, C0591, C0592, C0593, C0594, C0595, C0596, C0597, C0598, C0599, C0600, C0608, C0609, C0610, C0611, P1102031, P1102034, P1102039, P1102050, 09SC301

*) The list mentioned above is informative only. In general, this bulletin is valid for all SportCruiser aircraft equipped with the Dynon SkyView System with integrated transponder SV-XPNDR-261/262.

APPROVAL:

This SB was approved by:

Title	Head of the Design Organisation	Airworthiness Manager
Name	Jiří Konečný	Miroslav Koukal
Hand written signature	